


DC Feed-through P Series Filters

FLTP76D-230A

for General-Purpose Applications



- EMI filters for DC systems
- Rated voltage 200 VDC
- Rated current 230A @ 40°C
- 

Construction

Metal housing
Central axial terminal connection
UL approval potting compound

Features

Available in DC and AC version
Available in capacitor and filter format
Capacitor and filter in MKP technology (dry and self healing)
Solderless technology
Very high self-resonance frequency, attenuation up to GHz range
Offers connection mode in axial connection wires, soldering tag and screws

Applications

Power supply and distribution system in telecommunication switching applications
Power supply in wireless communication basestations
Power supply for laser applications in industrial sector
Power supply in ADSL/ISDN cabinet
Uses for shielded room and shielded room filters
Computer servers
Medical equipments: MRI

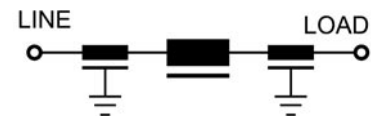
Marking

Marking on component:
Manufacturer's logo, ordering code
Rated voltage, rated current, date code
Minimum marking on packaging:
Manufacturer's logo, ordering code

Technical data

Rated voltage V_R	200 V DC
Rated current I_R	230A @ 40°C
C_R	2 × 3.3uF
Test voltage V_P	2121VDC/1 min (lines/case)
MTBF	>0.3 Million hours @ 40°C /230V
Climatic category	-40°C /+ 85°C (40/085/56 HPF)

Typical circuit diagram

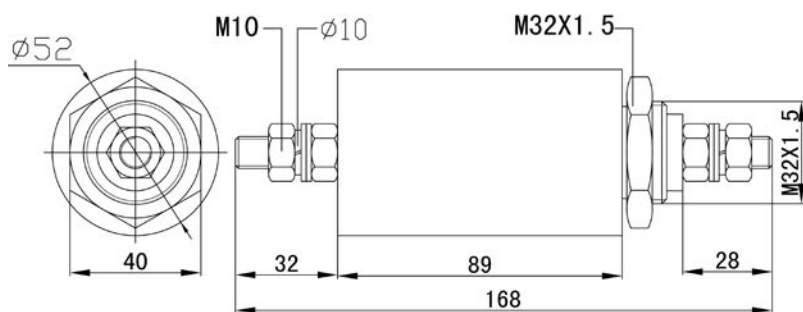


DC Feed-through C Series Filters

FLTP76D-230A

for General-Purpose Applications

Dimensional Drawing (unit: mm)

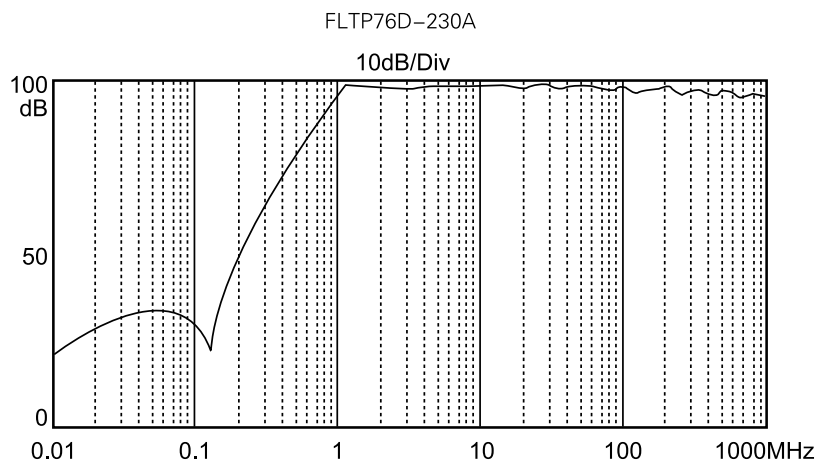


Installation guidance

- The torque applied to screw can not exceed 1.2Nm
- Filter metal housing must be electrically well contacted to cabinet panel, the grounding wire must be connected. The input and output wires should be well separated to avoid noise coupling.
- The filter must be installed at power input side of cabinet to shorten the input wire length, with such configuration, the radiated interferences can be minimized.
- Insulation should be handled around the connection part to avoid short circuit.

Insertion Loss (typical values at $Z=50\Omega$)

— common mode — differential mode



Cautions and warnings

Please read all safety and warning notes through carefully before installing the EMI filter and put-ting it into operation. The same applies to the warning signs on the filter. Please ensure that the signs are not removed nor their legibility impaired by external influences. Death, serious injury and major damage to equipment may occur if the appropriate safety measures are not carried out or the warnings in the text are not observed.

For the filter with leakage current greater than 0.5mA, reliable grounding and reliable insulation protection must be applied, otherwise, risk of electric shocking could be taken.