

Update firmware remotely with installer account— Manual update

List

Part 1. Update firmware remotely via your computer or phone1
 Part 2. Troubleshooting 2

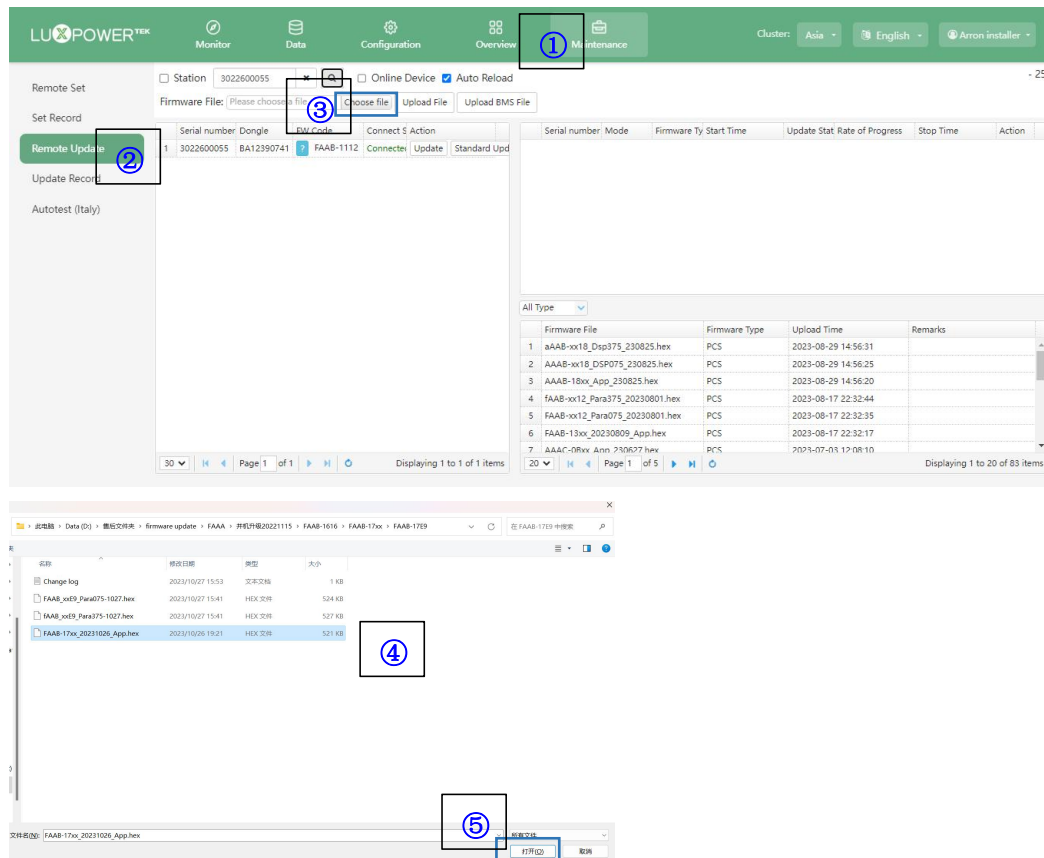
Release Date:Nov 4th,2023

Note:

Installers are able to update firmware remotely on Luxpower monitoring web Page by using a computer or phone.The web address is <https://server.luxpowertek.com/WManage/web/login>. Please follow the below steps .

Part1. Update firmware remotely via your computer or phone

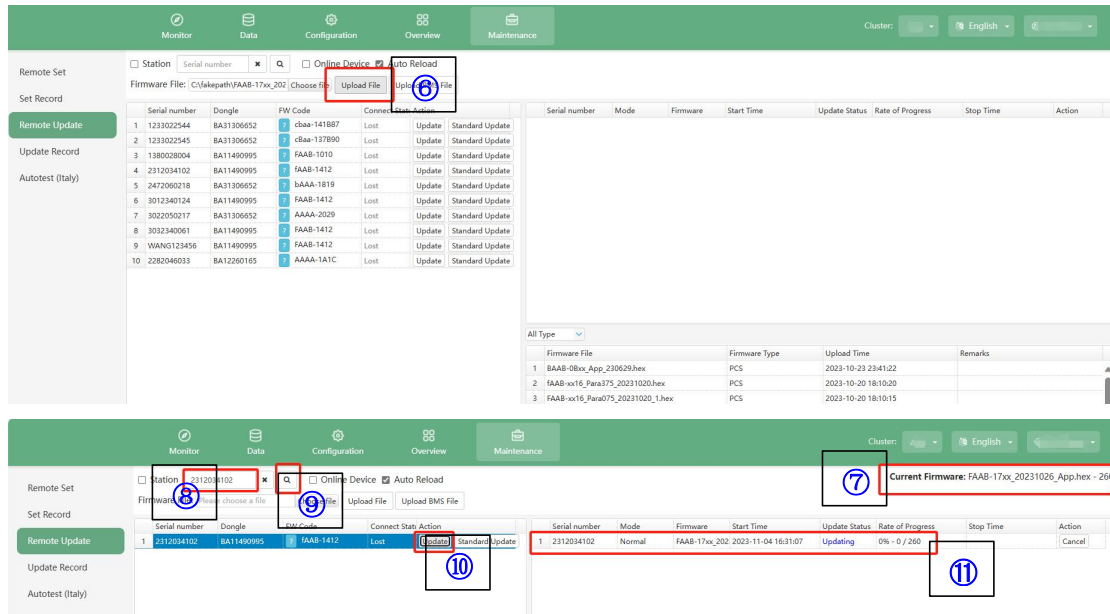
Step 1. Log into Luxpower monitoring web page on your computer with your installer account, Click the “① Maintain” tab, and then select “② Remote Update” on the left options.
Step 2. Click the “③ Choose file” and find the target file path you saved the target firmware documents “④”and select it ,and then click “⑤ Open”.



Step 3. Click the “⑥ Upload file” and you will see “⑦” on the left top corner .

Step 4. Input “⑧ inverter serial number” and click “⑨ search” , and then click “⑩ Update” tab and you will see “⑪ Updating progress” on the right side window.

When “⑪ updating progress is 100%” which means the firmware update has been done successfully ,and you can finish or start another firmware update in 5minutes. Normally there may be one or two or three firmware updates , and this depends on the related software modification and you can confirm the details with the technical support engineer.



Part 2. Troubleshooting

Question	Troubleshooting
1. During the firmware update, why is the update interrupted and show failure in the update progress area ?	Due to some external reasons, e.g. WiFi signal not good, inverter is shutdown intentionally, etc. If this failure happens, you can click the “Cancel” button in the progress area and then click “Standard Update” again , the update will continue from the interrupted point.

2. Why do the updates show successful in the update progress area and also on inverter screen, but the firmwares version are still not the latest on Luxpower monitoring web Page?

Due to some external reasons, the firmwares version don't be uploaded to web page automatically ,e.g. WiFi signal not good, inverter reboot incorrectly etc.

If this failure happens, you can reboot device manually or refresh inverter on web page as below.

Click the “① Configuration” tab, and then select “② Devices” on the left options. Input the “③ inverter SN” you need to check and then click “④ Q”. Click the “⑤ Refresh Inverter” option to refresh inverter. Finally check the firmwares version again.

